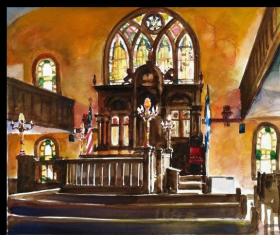




THE MAINE JEWISH MUSEUM

Celebrating Jewish Art, History, and Culture in Maine

THE MAINE JEWISH MUSEUM



Celebrating
Jewish Art, History, and Culture
in Maine

Maine Jewish Museum
267 Congress St.
Portland ME 04101
207-773-2339
mainejewishmuseum.org

Hours: M-F 10:00-4:00
Often later, call ahead.
OPEN SUNDAYS
12:00 - 4:00 PM

Gary Barron
Executive Director

Nancy Davidson
Curator in Residence
nancyd.mjm@gmail.com
207-239-4774

**BOARD OF
DIRECTORS**

**EXECUTIVE
COMMITTEE**

Steven Brinn
President

Aaron Shapiro
Vice President

Andrew Brenner

The Maine Jewish Museum began exhibiting Jewish Artists with a Maine connection in 2013. For the past seven years we have provided to our community over 80 exhibitions. We began with one exhibition every three months and now we provide three exhibitions every two months. As the Museum remains closed during this time of social distancing, we would like to share some memories of the wonderful exhibitions.

We have chosen 3 exhibits from each year to highlight and jog your memory during these stay at home times.

Enjoy!

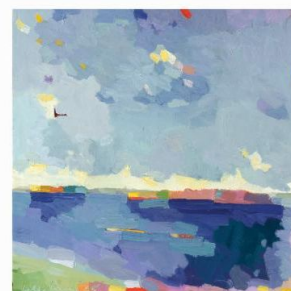
Nancy Davidson, Curator In Residence

Nanci Kahn, Curator of Photography

Please enjoy this sampling from our 2016 Exhibitions

Henry Isaacs

Whether it's people at play or work, or islands strewn across the reaches of Casco, Penobscot or Frenchman's Bays, Henry Isaacs uses all as elements to build his images. The subject is constructed from these individual parts and the tangible atmosphere that lies between.



Camille Davidson

This series of paintings - Kabbalat Ohr, the Sefirot series, and Jacob's Pillow are infused with the ancient mystical practice of remaining receptive to receiving the shards of light, the sparks of Holiness, the remnants of Divine energy from Genesis that are still present in the ordinary moments of our daily lives. Ms. Davidson's paintings seek to receive, hold, and liberate such moments. Boldly rendered, they are less didactic and more experiential, less literal and more expressive.

Treasurer

Ivan Howard
Secretary

Rabbi Gary Berenson
Founding Executive
Director

Jody Sataloff
Founding President

**BOARD OF
DIRECTORS AT
LARGE**

Nancy Osher Blumberg
Harris Gleckman
Lee Goldberg
Barry Hoffman
Judy Glickman Lauder
Ruthie Noble
Abe Peck
Janet Raffel
Amy Tinkle
Nancy Ziegler

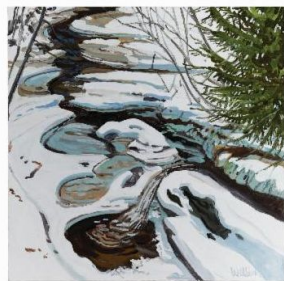


Neil Welliver

Neil Welliver is best known as a contemporary realist painter.

His education in the 1950s was at the height of abstract expressionism. Accordingly, his paintings have elements of abstraction, although most strongly in his early works.

During the 1960s and 1970s, Welliver's paintings were dominated by the figure. This body of work, whether of men, women, cats, dogs, cows, children, musicians or skeletons...filled a busy world for Welliver and paved his way toward a final, deep and quiet absorption with the Maine landscape. By the 1980s, the Maine landscape became the dominant focus of his work for the rest of his life.



Maine Jewish Museum



The mission of the Maine Jewish Museum is to honor the contributions and diversity of Maine's Jewish immigrants in the context of the American experience. Through exhibits and programming, the Museum seeks to build bridges of appreciation and understanding with people of all backgrounds.

Join us in celebrating Jewish ART, HISTORY and CULTURE in Maine.

Maine Jewish Museum, 267 Congress St, Portland, ME 04101

[SafeUnsubscribe™ gleckman@mindspring.com](#)

[Forward this email](#) | [Update Profile](#) | [About our service provider](#)

Sent by execd@mainejewishmuseum.org in collaboration with

